



Product Portfolio

...together with passion!

Dear Reader

What once started out as an idea became a unique product and grew over the years into a complete portfolio. Today, Mathys stills stands for tradition and development. It is our goal to maintain the pioneering spirit of our founder Robert Mathys sen., thus making a significant contribution to medical progress.

Lean processes in our Innovation, Development and Marketing departments and constant research result in novel solutions, making Mathys a leader in European Orthopaedics. At the same time, we continue with the improvements of our existing products to meet the demands of surgeons and patients. The challenge lies in finding such innovative solutions and adapting our current portfolio to the changing demands. This requires intensive dialogue and close cooperation with surgeons, who are working daily with our products.

On the following pages you will find an overview of our products, our solutions for our common target: achieving the best possible result for the patients – together with passion!

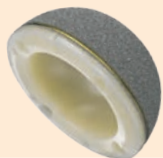
The image shows two handwritten signatures in blue ink. The signature on the left is 'P. Wiederkehr' and the signature on the right is 'R. Lenzeder'. Both are written in a cursive, flowing style.

Pascal Wiederkehr
Director Development

Ronald J. Lenzeder
Director Marketing

HIP PRIMARY

MONOBLOC



RM Pressfit
vitamys®



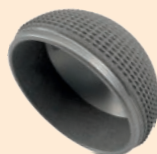
RM Pressfit



RM Classic Cup

RM Cup

MODULAR



aneXys Flex



aneXys Cluster



aneXys Inlay vitamys®
hooded / flat



seleXys® PC



seleXys® Inlay
ceramys®



seleXys® Inlay vitamys®
hooded / flat

seleXys

HIP PRIMARY

DUAL MOBILITY



DS Evolution
uncemented

DS Evolution
cemented



DS Evolution
Revision



DS Evolution
Inlay

BIPOLAR / HEMI



Bipolar Stainless
Steel



Bipolar Bionit®2



Hemi Stainless
Steel

HEADS



ceramys®



symarec®



Steel

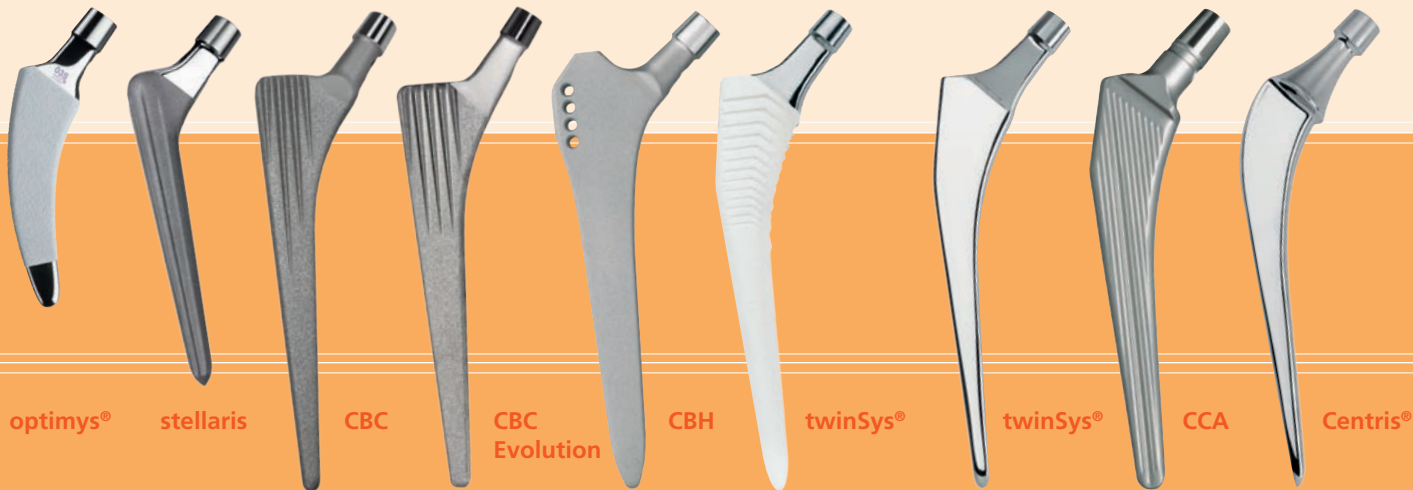


CoCrMo

HIP PRIMARY

UNCEMENTED

CEMENTED



twinSys

HIP REVISION

FEMORAL



twinSys®
Long



Modular
Revision
Stem



ceramys® Revision

ACETABULAR



RM Classic Revision Cup



CCB



CCE

twinSys

RM Cup

GLOBAL **KNEE** PORTFOLIO

FIXED BEARING

MOBILE BEARING



balanSys® PS

balanSys® UC

balanSys® CR

balanSys® RP



GLOBAL **KNEE** PORTFOLIO

FIXED BEARING TiN**b**N

MOBILE BEARING TiN**b**N

PATELLA



balanSys® PS



balanSys® UC



balanSys® CR



balanSys® RP



3 Peg

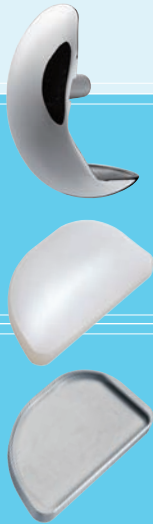


3 Peg FLAT



UNI KNEE

FIXED BEARING



balanSys® UNI

balanSys® UNI

REVISION KNEE

REVISION SYSTEM



balanSys® REV

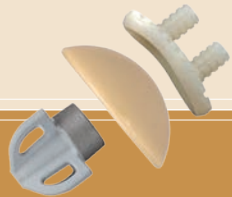
balanSys® REV

SHOULDER

Affinis®

vitamys®

vitamys®



Affinis® Short



Affinis®



Affinis® Inverse



Affinis® Fracture

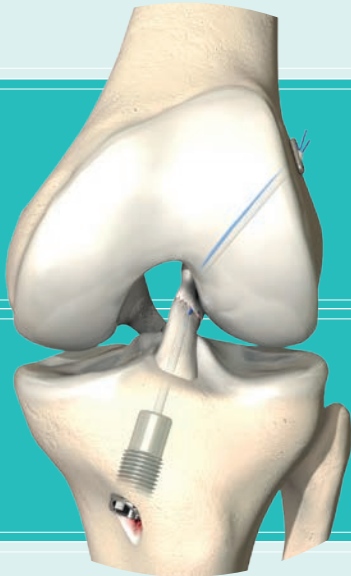


Affinis® Fracture Inverse

Affinis

SPORTHOPAEDICS

Ligamys®



Ligamys

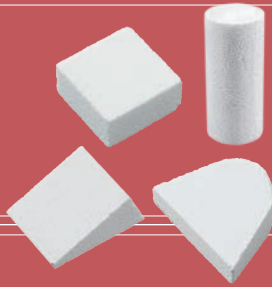
BONE GRAFT SUBSTITUTES

OSTEOSYNTHESIS & ORTHOPAEDICS

DENTAL



cyclOS® Granules



cyclOS® Preforms



cyclOS® Putty / Ceros® TCP Putty



Ceros® TCP Granules

...together with passion!

Australia Mathys Orthopaedics Pty Ltd
Lane Cove West, NSW 2066
Tel: +61 2 9417 9200
info.au@mathysmedical.com

Austria Mathys Orthopädie GmbH
2351 Wiener Neudorf
Tel: +43 2236 860 999
info.at@mathysmedical.com

Belgium Mathys Orthopaedics Belux N.V.-S.A.
3001 Leuven
Tel: +32 16 38 81 20
info.be@mathysmedical.com

France Mathys Orthopédie S.A.S
63360 Gerzat
Tel: +33 4 73 23 95 95
info.fr@mathysmedical.com

Germany Mathys Orthopädie GmbH
«Centre of Excellence Sales» Bochum
44809 Bochum
Tel: +49 234 588 59 0
sales.de@mathysmedical.com
Hotline: +49 1801 628497 (MATHYS)

«Centre of Excellence Ceramics» Mörsdorf
07646 Mörsdorf/Thür.
Tel. +49 36428 494 0
info.de@mathysmedical.com

«Centre of Excellence Production» Hermsdorf
07629 Hermsdorf
Tel. +49 36428 494 110
info.de@mathysmedical.com

Japan Mathys KK
Tokyo 108-0075
Tel: +81 3 3474 6900
info.jp@mathysmedical.com

New Zealand Mathys Ltd.
Auckland
Tel: +64 9 478 39 00
info.nz@mathysmedical.com

Netherlands Mathys Orthopaedics B.V.
3905 PH Veenendaal
Tel: +31 318 531 950
info.nl@mathysmedical.com

P. R. China Mathys (Shanghai) Medical Device Trading Co., Ltd
Shanghai, 200041
Tel: +86 21 6170 2655
info.cn@mathysmedical.com

Switzerland Mathys (Schweiz) GmbH
2544 Bettlach
Tel: +41 32 644 1 458
info@mathysmedical.com

United Kingdom Mathys Orthopaedics Ltd
Alton, Hampshire GU34 2QL
Tel: +44 8450 580938
info.uk@mathysmedical.com

Local Marketing Partners in over 30 countries worldwide ...